

ENGLISH

JVC SOFTWARE INSTALLATION AND PC CONNECTION GUIDE

LYT1391-001B
© 2004 Victor Company of Japan, Limited

Printed in Malaysia
1104MKH-ID-VM

M5D5/D2 -DSC

This document explains the basic information such as system requirements, installation and connections, etc. for the provided software.

CAUTION:

- Operate this equipment according to the operating procedures described in this manual.
- Use only the provided CD-ROM. Never use any other CD-ROM to run this software.
- Do not attempt to modify this software.
- Changes or modifications not approved by JVC could void user's authority to operate the equipment.

How to handle a CD-ROM

- Take care not to soil or scratch the mirror surface (opposite to the printed surface). Do not write anything or put a sticker on either the front or back surface. If the CD-ROM gets dirty, gently wipe it with a soft cloth outward from the center hole.
- Do not use conventional disc cleaners or cleaning spray.
- Do not bend the CD-ROM or touch its mirror surface.
- Do not store your CD-ROM in a dusty, hot or humid environment. Keep it away from direct sunlight.

Notice for Users

Use of this software is authorized according to the terms of the software license. When contacting the nearest JVC office or agency in your country about this software (refer to the JVC Worldwide Service Network at <http://www.jvc-victor.co.jp/english/worldmap/index-e.html>), please fill out the following and have the appropriate information ready.

Product Name		
Model		
Problem		
Error Message		
PC	Manufacturer	
	Model	<input type="checkbox"/> Desktop <input type="checkbox"/> Laptop
	CPU	
	OS	
	Memory	MB
	Available Hard Disk Space	MB

Please note that it may take some time to respond to your questions, depending on their subject matter.

JVC cannot answer questions regarding basic operation of your PC, or questions regarding specifications or performance of the OS, other applications or drivers.

CyberLink

For details of CyberLink's technical support service, refer to the "Readme" of the provided software (pg. 6) and the following website: <http://www2.cli.co.jp/products/dvc/>

System Requirements

Windows®

For PowerProducer 2 Gold VCD

The following requirements must be satisfied to connect a camcorder to a PC and to use PowerProducer 2 Gold VCD.
OS: Windows® 98 Second Edition (98SE) (pre-installed), Windows® Millennium Edition (Me) (pre-installed), Windows® 2000 Professional (2000) (pre-installed), Windows® XP Home Edition (XP) (pre-installed), or Windows® XP Professional (XP) (pre-installed)
CPU: Intel Pentium® II, at least 450 MHz, Intel Pentium® III, at least 800 MHz recommended
RAM: At least 128 MB, at least 256 MB recommended
Free hard disk space: At least 100 MB for installation, at least 1 GB for creating VCD
Connector: IEEE1394 (i.LINK) connector
Miscellaneous: DirectX 9.0 or later (DirectX 9.0 is installed automatically), Internet Explorer 5.5 or later
Supported media: CD-R/RW
Display: Must be capable of displaying 1024 x 600 dots with 16-bit color

For more details, refer to CyberLink web site: http://www.gocyberlink.com/english/products/powerproducer/2_gold/comp_dvd_drives.jsp

- The system requirements information above is not a guarantee that the provided software will work on all personal computers meeting those requirements.
- Microsoft® and Windows® are either registered trademarks or trademarks of Microsoft Corporation in the United States and/or other countries.
- Other product and company names included in this instruction manual are trademarks and/or registered trademarks of their respective holders.

Software Installation (Windows®)

Follow the procedure described below to install the software. Quit any other software you are using. (Check that there are no other application icons on the status bar.)

PowerProducer 2 Gold VCD

PowerProducer 2 Gold VCD is software for creating movie discs incorporating not only video but also slideshows. This software uses a simple wizard format for creating a wide range of different format discs. You can also edit imported video. You can import video from the camera, edit it, and then create a slideshow from still images. You can create a customized menu for the video or slideshow and write the contents to VCD.

NOTE:

If PowerProducer is already installed, uninstall the software, then install the supplied PowerProducer.

Following steps are the example of PowerProducer on Windows® XP.

1 Load the provided CD-ROM into the PC.

After a moment, [Choose Setup Language] screen appears.

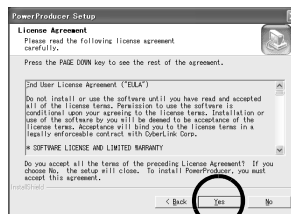


2 Select the desired language and click [OK].

[PowerProducer Setup] screen appears.

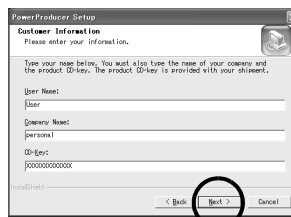
3 Click [Next].

[License Agreement] screen appears.



4 Click [Yes].

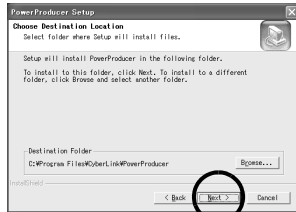
[Customer Information] screen appears.



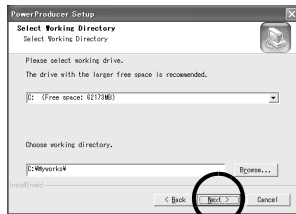
5 Confirm your information and click [Next].

- It is possible to change the information.

[Choose Destination Location] screen appears.



6 Click [Next].
[Select Working Directory] screen appears.



7 Select the Working Directory and click [Next].
[Select Program Folder] screen appears.

8 Click [Next].
[Setup will install...] screen appears.

9 Click [Next].
Wait for a moment until the installation is finished.
When the installation is finished, [Setup Complete] screen appears.

For Windows® 98SE/Me/2000:
Before [Setup Complete] screen appears, [Question] screen appears. Click [Yes]. Then, [DMA setting] screen appears. Click [OK]. [Setup Complete] screen appears.

10 Click [Finish].
Then, CyberLink PowerProducer Readme file and its registration screen appear.

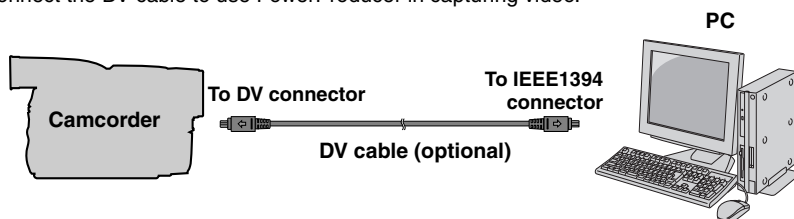
- Be sure to read the Readme file.
- To receive the customer support service and product information, fill in and submit the user registration.

NOTE:
If you perform installation of a software that is already installed, uninstallation will start. In this case, perform the installation again after uninstallation is finished.

Connections (Windows®)

Connecting the DV cable

Connect the DV cable to use PowerProducer in capturing video.



- 1** To assure safety, make sure all units are turned off before making any connections.
- 2** Use the DV cable to connect the camcorder to the PC.

NOTES:

- It is recommended to use the AC Adapter as the power supply instead of the battery pack.
- When the DV cable is connected, turning on or off the camcorder causes malfunctions of the PC.
- If PowerProducer does not recognize the camcorder, exit PowerProducer once, then start it again.
- When connecting the camcorder to a PC using a DV cable, make sure to follow the procedure below. Connecting the cable incorrectly may cause malfunctions to the camcorder and/or the PC.
 - Connect the DV cable first to the PC, and then to the camcorder.
 - Connect the DV cable (plugs) correctly according to the shape of the DV connector.

Help/Readme

This manual only refers to software installation and PC connection. For more details of the software, refer to its help/Readme.

■ PowerProducer

- 1 Click [Start], go to [All Programs] or [Programs] – [CyberLink PowerProducer] and then click Help/Readme depending on your preference.



INFORMATION

The supplied PowerProducer is a version with limited functionality. The Help files are written for the commercial version available in stores. For information about the differences with the commercial version, see the Readme file.

