

JVC



MultiMediaNavigator

For Windows®

BEFORE OPERATION

ENGLISH



INSTRUCTIONS

LYT0582-001A

EN

IMPORTANT**TO CUSTOMERS:****MAKE SURE TO READ THIS CAREFULLY BEFORE OPENING THE SEALED SOFTWARE PACKETS**

Thank you for purchasing our product. In order to start using the software program enclosed, you are required to accept the terms and conditions of the agreement as provided below.

Software License Agreement

This is a legal agreement between you (either an individual or an entity) and Victor Company of Japan, Limited (JVC). By opening the sealed software packages and/or by using the Program, you are agreeing to be bound by the terms of this Agreement. Should you not agree to the terms hereof, return the unopened software packets and the accompanying items to the place where you obtained them.

1. GRANT OF LICENSE

This License Agreement (Agreement) permits you to use the software program (Program) enclosed in this package and/or the accompanying written material (e. g. printed manuals). Although you are also granted license to load the Program into temporary memory (i. e. RAM) or install the Program once into permanent memory (e. g. hard disk, CD-R, or other storage device) of one (1) computer system, you are strictly prohibited to install the Program on a network server for the sole purpose of internal distribution.

2. COPYRIGHT

Notwithstanding the provision of Article 1 hereof, any copyright in the Program is owned exclusively by JVC and is protected by the Japanese copyright law, copyright laws of other countries, as applicable, and relevant provisions under international treaties including the Berne Convention for the Protection of Literary and Artistic Works, as amended, and the Universal Copyright Convention, as amended. Therefore, you must treat the Program like any other copyrighted material except that you may either (a) make one (1) copy of the Program solely for your personal backup or archival purposes, or (b) transfer the Program to a single hard disk, provided that you keep the original solely for your personal backup or archival purposes.

3. RESTRICTION ON THE PROGRAM

You may not reverse engineer, decompile, disassemble, revise or modify the Program, except to the extent that such restriction is expressly prohibited by applicable law. JVC and its distributors and dealers shall not be liable for any claims or defects etc. arising out of or in connection with such prohibited activities as indicated in this Agreement.

4. OTHER RESTRICTIONS

You may not rent, lease or transfer the Program to any third party nor let such a party use the Program.

5. LIMITED WARRANTY

JVC warrants that any media in which the Program is embodied (e.g. floppy discs, CD-ROM, etc.) are free from any defects in materials and workmanship for a period of thirty (30) days from the date of your purchase and that any hardware accompanying the Program is also free from defects to the extent provided in the attached Warranty Form. JVC's entire liability and your exclusive remedy in connection with the Program shall be, at JVC's option, either (a) return of the price paid, or (b) replacement of defective Program media.

6. DISCLAIMER OF WARRANTIES

EXCEPT FOR THE EXPRESS WARRANTIES STATED HEREIN AND TO THE EXTENT PERMITTED BY APPLICABLE LAW, JVC AND ITS SUPPLIERS DISCLAIM ANY OTHER WARRANTIES, EITHER EXPRESS OR IMPLIED, INCLUDING BUT NOT LIMITED TO IMPLIED WARRANTIES OF MERCHANTABILITY AND FITNESS FOR A PARTICULAR PURPOSE IN REGARD TO THE PROGRAM AND THE ACCOMPANYING PRINTED MATERIALS.

7. LIMITED LIABILITY

TO THE EXTENT PERMITTED BY APPLICABLE LAW, IN NO EVENT SHALL JVC AND ITS SUPPLIERS BE LIABLE FOR ANY INDIRECT, SPECIAL, INCIDENTAL OR CONSEQUENTIAL DAMAGES WHATSOEVER, REGARDLESS OF THE FORM OF ACTION WHETHER IN CONTRACT, TORT, STRICT PRODUCT LIABILITY OR OTHERWISE (INCLUDING BUT NOT LIMITED TO DAMAGES FOR LOSS OF PROFITS, BUSINESS INTERRUPTION, LOSS OF BUSINESS INFORMATION OR ANY OTHER PECUNIARY LOSS) ARISING OUT OF OR IN CONNECTION WITH THE USE OF OR INABILITY TO USE THE PROGRAM, EVEN IF JVC HAS BEEN ADVISED OF THE POSSIBILITY OF SUCH DAMAGES.

Victor Company of Japan, Limited

GETTING STARTED	5 – 6
What is MultiMediaNavigator?	5
What is JLIP?	5
Major Features	5
Operating Environment	6
INSTALLATION	7
CONNECTIONS	8 – 9
NOTICE FOR USERS	10

CAUTION:

- Operate this equipment according to the operating procedures described in this manual.
- Use only the provided CD-ROM. Never use any other CD-ROM to run this software.
- Do not attempt to modify this software.
- Changes or modifications not approved by JVC could void user's authority to operate the equipment.

How to handle a CD-ROM

- Take care not to soil or scratch the mirror surface (opposite to the printed surface). Do not write anything or put a sticker on either the front or back surface. If the CD-ROM gets dirty, gently wipe it with a soft cloth outward from the center hole using a circular motion.
- Do not use conventional disc cleaners or cleaning spray.
- Do not bend the CD-ROM or touch its mirror surface.
- Do not store your CD-ROM in a dusty, hot or humid environment. Keep it away from direct sunlight.

What is MultiMediaNavigator?

MultiMediaNavigator is a set of application software that gives you creative control over recordings made with a video source unit. Using this software, you can transfer still images from the video source unit to a PC for editing, as well as control the video source unit from the PC.

What is JLIP?

JLIP* stands for Joint Level Interface Protocol, a new communication protocol which allows AV units equipped with a JLIP terminal to be controlled by a personal computer.

* **JLIP** is a registered trademark of JVC.

Major features

■ Picture Navigator

Picture Navigator allows you to transfer still images between a video source unit and a PC via the RS-232C serial port. Captured images will be 640 x 480 pixels with 16.7 million colors.

■ JLIP Video Capture

JLIP Video Capture allows you to capture still images from a video source unit to a PC via the RS-232C serial port.

■ JLIP Video Producer

JLIP Video Producer allows you to control a video source unit from a PC. You can copy scenes from the video source unit to a VCR by setting In/Out points.

Operating Environment

- Personal Computer with Microsoft® Windows® 95/Windows® 98
- CPU : Intel® Pentium® or higher processor
- Minimum RAM requirement : 32 MB
- Available Hard Disk space of at least 20 MB
- Color display capable of at least 65,536 colors
Recommended 1024 x 768, 16.7 million colors
- 1 free serial transmission port, compatible with 9600 bps or higher transmission rate,
connectable to RS-232C with 9 pin serial connector
(Recommended compatible with UART 16550A)
- Mouse (Windows® compatible)
- CD-ROM drive

NOTE

An optional 9 pin serial conversion adapter is required for computers using a serial communication port other than a standard 9 pin.

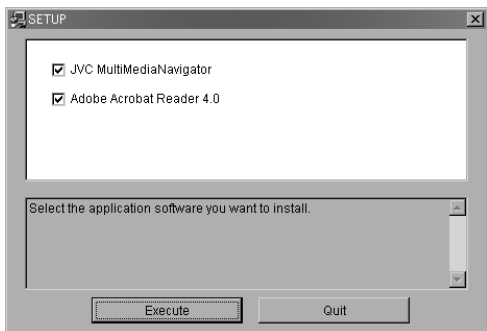
- * Intel® and Pentium® are either registered trademarks or trademarks of Intel Corporation.
- * Microsoft® and Windows® are either registered trademarks or trademarks of Microsoft Corporation in the United States and/or other countries.
- * Other product and company names included in this instruction manual are trademarks and/or registered trademarks of their respective holders.

INSTALLATION

For details on the basic operations of Windows® 95/98, please see your Windows® 95/98 or PC instruction manual.

Starting Windows® 95/98

- Quit any other software you are using. (Check that there are no other application icons on the task bar.)



1 Insert the supplied CD-ROM disc into the CD-ROM drive.

- The **SETUP** window should appear after a few moments.
- Perform the following operation if the setup window does not appear.
 - Double click **My Computer**.
 - Double click the **CD-ROM** icon.
 - Go to Step 2.

2 Click **Execute** on the **SETUP** window.

- If the application has already been installed, click on those application items which do not need to be installed to remove the check mark displayed.

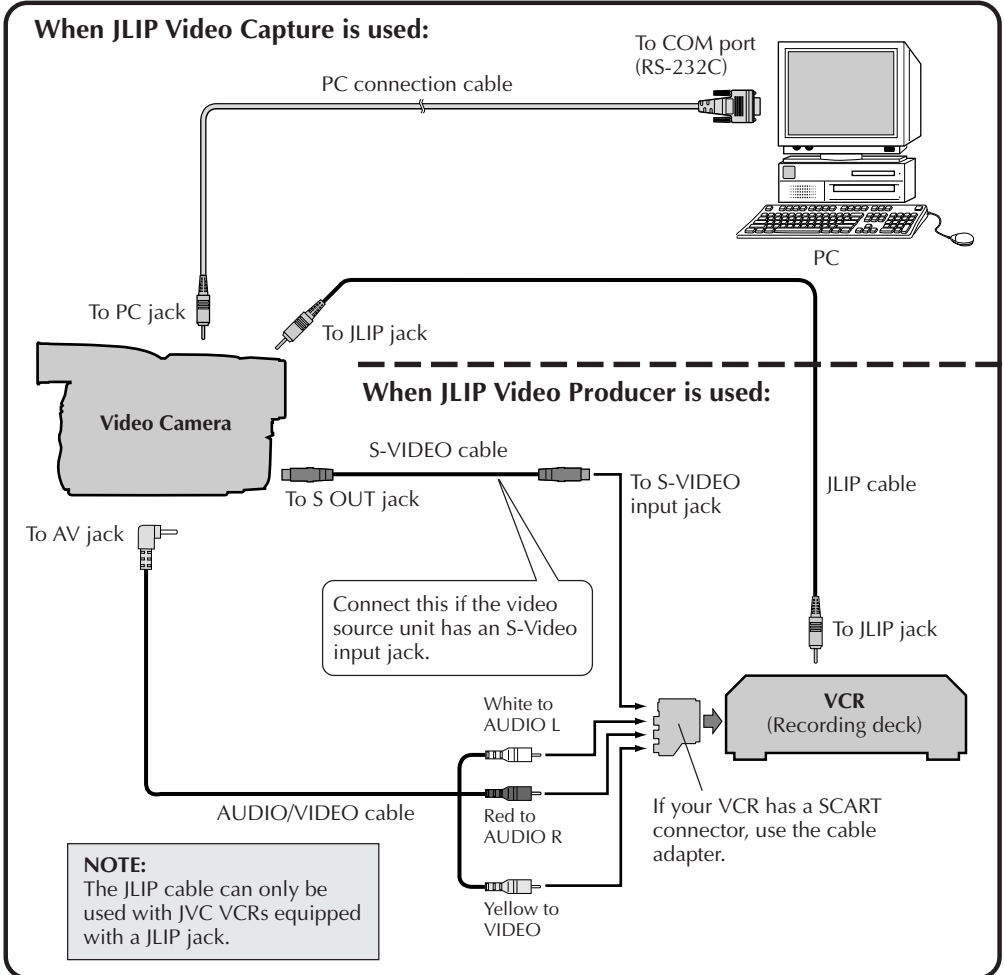
3 Follow the on-screen instructions.

4 Click **Quit** on the **SETUP** window when installation is complete.



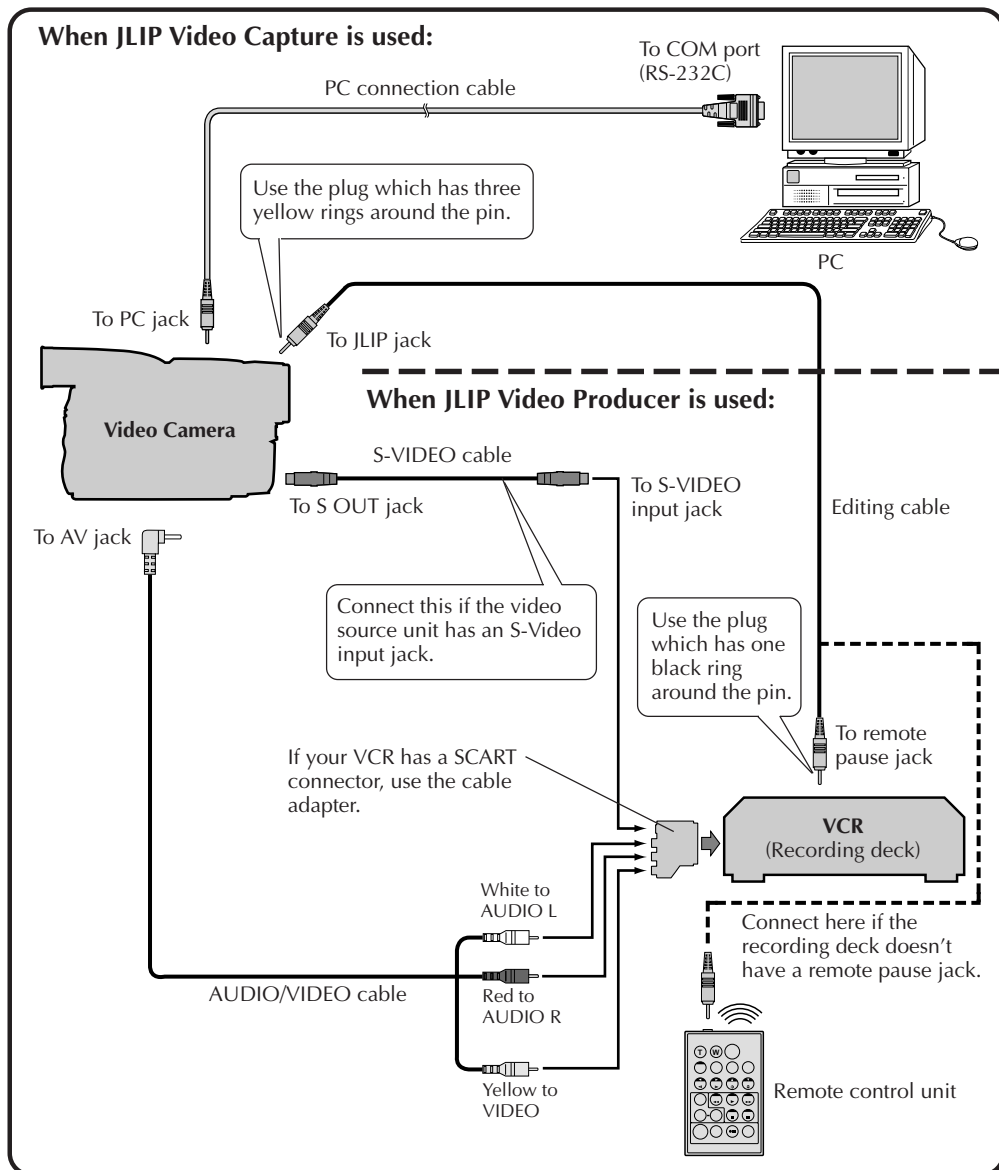
- To assure safety, make sure all units are turned off before making any connections.
- We recommend that you use the AC Power Adapter/Charger.
- When a core filter is attached to a cable, be sure to plug the connector equipped with the core filter into the video camera.
- Do not make any connections to the video camera's DV OUT connector.

WHEN CONNECTED TO A VCR EQUIPPED WITH A JLIP JACK



WHEN CONNECTED TO A VCR NOT EQUIPPED WITH A JLIP JACK

When using a VCR not equipped with a JLIP jack, set your VCR brand using the remote control unit provided with the video camera, then perform editing using the remote control.



Use of this software is authorized according to the terms of the software license.

When contacting the nearest JVC office or agency in your country about this software (refer to the JVC Worldwide Service Network at <http://www.jvc-victor.co.jp/english/worldmap/index-e.html>), please fill out the following and have the appropriate information ready.

Product Name		
Model		
Problem		
Error Message		
PC	Manufacturer	
	Model	<input type="checkbox"/> Desktop <input type="checkbox"/> Laptop
	CPU	
	OS	
	Memory	MB
	Available Hard Disk Space	MB

Please note that it may take some time to respond to your questions, depending on their subject matter.

JVC cannot answer questions regarding basic operation of your PC, or questions regarding specifications or performance of the OS, other applications or drivers.

JVC

VICTOR COMPANY OF JAPAN, LIMITED